

# PTACHC Legislative

June 2022



PTA Relies On  
Good  
Communication  
To Advocate  
Effectively



# Communications

PTA Council relies on Presidents and Delegates to... "Delegate Information"

If representatives do not participate in PTACHC or Online Communications – messaging and representation for each school is lost.

If delegates do not communicate to local membership – the messaging and representation for each school is lost.

PTA Advocacy - BOARD OF EDUCATION CANDIDATE FORUM - May 11  
Rebroadcast online for your local PTA members schedule and convenience  
PTACHC YouTube Page - <https://www.youtube.com/channel/UCSSjoBfKcyFih0IB8GHB53A>



# Forums

2022 Howard County Board of Education Forum  
<https://www.youtube.com/watch?v=HOJZVQ4XyEA>

PTA Advocacy - COUNTY COUNCIL CANDIDATE FORUM - May 25

Rebroadcast online for your local PTA members schedule and convenience

PTACHC YouTube Page - <https://www.youtube.com/channel/UCSSjoBfKcyFih0IB8GHB53A>



# Forums

2022 Howard County Council Forum

[https://www.youtube.com/watch?v=O1Vz5ark\\_ZU](https://www.youtube.com/watch?v=O1Vz5ark_ZU)

PTA Advocacy - COUNTY EXECUTIVE AND STATE DELEGATION CANDIDATE FORUM  
JUNE 22 MT. HEBRON HIGH SCHOOL @ 7PM

Will be rebroadcast online for your local PTA members schedule and convenience  
PTACHC YouTube Page - <https://www.youtube.com/channel/UCSSjoBfKcyFih0IB8GHB53A>

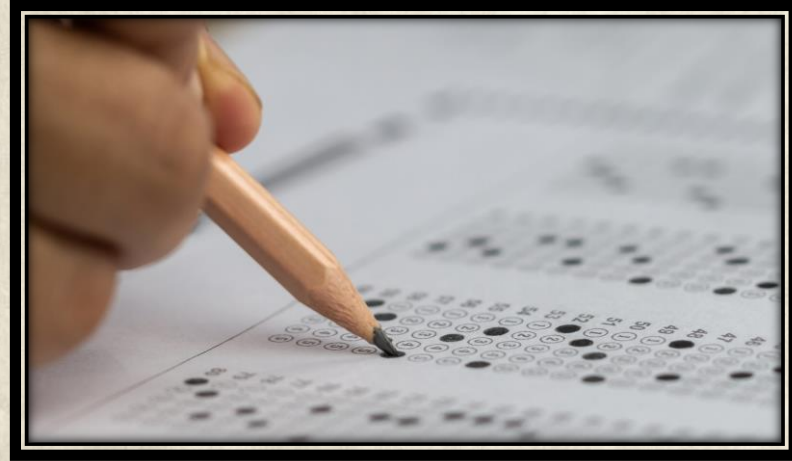


# Forums

Attend in Person or watch rebroadcast! Submit your questions

<https://forms.gle/Vh5ZNhPJtpXqzaaH8>

Yes, There Is A Written Portion.  
Your Questions That Were Not Presented  
In The Limited Time May Be Answered.



# Forums

Written Answers

All Candidates get an opportunity to respond in writing to any question asked at forum to their opponents.

Look for results on [WWW.PTACHC.ORG](http://WWW.PTACHC.ORG)



Board of Education has meetings through the summer... Plus redistricting...

The Howard County Council has legislation through July, a very brief pause in August,  
and new legislation by September.

-Yet the General Plan continues...

The State prepares bills for the 2023 session...

The PTACHC Board continues to meet and host training and forums while preparing for  
the new school year.

# Summer Break?

The County Executive has reinstated  
The Naming Commission  
To Review The Names Of  
All County Infrastructure.



# Renaming Schools?

<https://www.howardcountymd.gov/News051222>



The General Plan Continues with public input on “chapters” through the summer.

The default assumption with no participation is that residents will approve of increased density with minimal school resources.

PTA members should take each opportunity to advocate for education resources throughout the process.

Next events

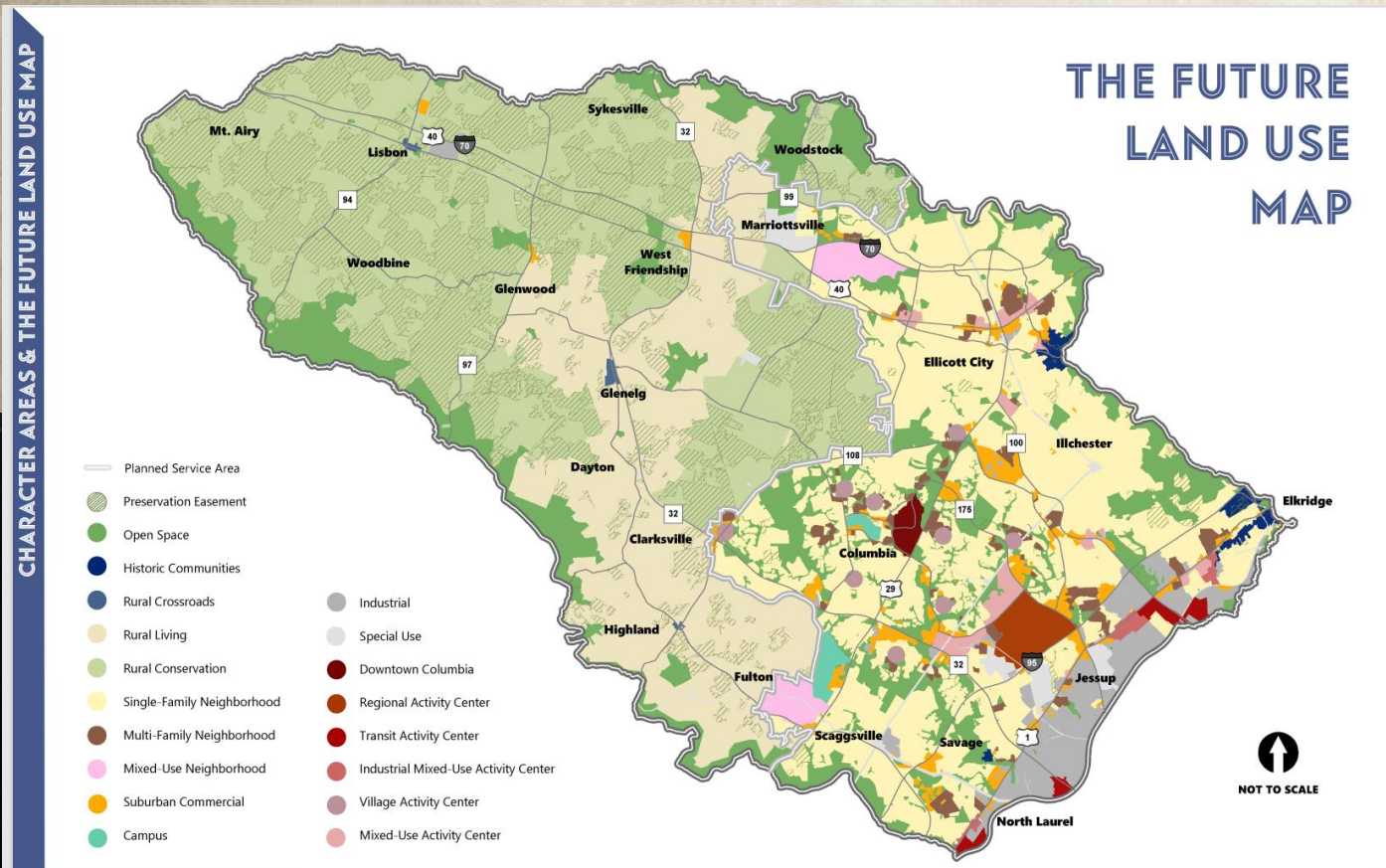
Wednesday, June 8, 2022

6:30-8:30 pm

Thursday, June 9, 2022

3:00-5:00 pm

[www.hocobydesign.com](http://www.hocobydesign.com)



# General Plan

# NO... Adequate Public Facilities Updates Are Not On Hold Until The DPZ Convenes A Committee After The General Plan.

*They Happen Regularly...*

See County Resolution CR-99 (Housing Allocations)

See County Resolution CR-100 (School Charts)

Testimony June 21, 7PM

<https://cc.howardcountymd.gov/Legislation>

# APFO

**ELEMENTARY SCHOOLS - JUNE 2022 APFO School Capacity Chart**  
Capacity Utilization Rates with Board of Education's Requested FY 2023 Capital Budget Projects  
Chart reflects May 2022 Projections and the Board of Education's Requested FY 2023 Capacities

	2020	2021	2022	2023	2024	2025	2026	2027	2028	2029	2030	2031	2032	2033	2034	2035
<b>Chesapeake East</b>	2026	2041	2057	2073	2089	2105	2121	2137	2153	2169	2185	2201	2217	2233	2249	2265
Chesapeake ES	398	398	398	410	418	427	435	443	452	460	468	477	485	493	501	509
Jeffers Hill ES	402	402	402	395	398	392	385	378	371	364	357	350	343	336	329	322
Phelps Lucas ES	287	287	287	286	285	284	283	282	281	280	279	278	277	276	275	274
Reverend Forest ES	380	380	380	378	376	374	372	370	368	366	364	362	360	358	356	354
Robert Springs ES	540	540	540	537	534	531	528	525	522	519	516	513	510	507	504	501
Thurston Hill ES	509	509	509	508	507	506	505	504	503	502	501	500	499	498	497	496
<b>Region Totals</b>	<b>2834</b>	<b>2834</b>	<b>2834</b>	<b>2771</b>	<b>2761</b>	<b>2754</b>	<b>2746</b>	<b>2738</b>	<b>2730</b>	<b>2722</b>	<b>2714</b>	<b>2706</b>	<b>2698</b>	<b>2690</b>	<b>2682</b>	<b>2674</b>
<b>Chesapeake West</b>	561	561	561	433	419	405	391	377	363	349	335	321	307	293	279	265
Brentwood ES	521	521	521	543	538	533	528	523	518	513	508	503	498	493	488	483
Longfield ES	512	512	512	489	485	481	477	473	469	465	461	457	453	449	445	441
Running Brook ES	495	495	495	436	430	424	418	412	406	400	394	388	382	376	370	364
Westmeadows ES	633	633	633	436	426	416	406	396	386	376	366	356	346	336	326	316
<b>Region Totals</b>	<b>2537</b>	<b>2537</b>	<b>2537</b>	<b>2484</b>	<b>2468</b>	<b>2451</b>	<b>2434</b>	<b>2417</b>	<b>2400</b>	<b>2383</b>	<b>2366</b>	<b>2349</b>	<b>2332</b>	<b>2315</b>	<b>2298</b>	<b>2281</b>
<b>Northwest</b>	726	726	726	734	731	728	725	722	719	716	713	710	707	704	701	698
Bedford Springs ES	726	726	726	734	731	728	725	722	719	716	713	710	707	704	701	698
Deer Run ES	749	749	749	751	751	751	751	751	751	751	751	751	751	751	751	751
Ducketh Lane ES	630	630	630	639	639	639	639	639	639	639	639	639	639	639	639	639
Herndon ES	740	740	740	741	741	741	741	741	741	741	741	741	741	741	741	741
Harvester Hills ES	810	810	810	816	816	816	816	816	816	816	816	816	816	816	816	816
Millstone ES	636	636	636	636	636	636	636	636	636	636	636	636	636	636	636	636
Rockburn ES	584	584	584	584	584	584	584	584	584	584	584	584	584	584	584	584
Wheatfield ES	799	799	799	799	799	799	799	799	799	799	799	799	799	799	799	799
Wheatstone ES	603	603	603	603	603	603	603	603	603	603	603	603	603	603	603	603
Wheatstone II ES	799	799	799	799	799	799	799	799	799	799	799	799	799	799	799	799
<b>Region Totals</b>	<b>6703</b>	<b>6703</b>	<b>6703</b>	<b>6824</b>	<b>6824</b>	<b>6824</b>	<b>6824</b>	<b>6824</b>	<b>6824</b>	<b>6824</b>	<b>6824</b>	<b>6824</b>	<b>6824</b>	<b>6824</b>	<b>6824</b>	<b>6824</b>
<b>North</b>	147	147	147	170	168	166	164	162	160	158	156	154	152	150	148	146
Camden Lane ES	147	147	147	170	168	166	164	162	160	158	156	154	152	150	148	146
Northfield Station ES	732	732	732	736	735	734	733	732	731	730	729	728	727	726	725	724
Northwood ES	467	467	467	468	468	468	468	468	468	468	468	468	468	468	468	468
Northfield ES	700	700	700	740	740	740	740	740	740	740	740	740	740	740	740	740
St John Lane ES	612	612	612	612	612	612	612	612	612	612	612	612	612	612	612	612
Wynnton ES	788	788	788	788	788	788	788	788	788	788	788	788	788	788	788	788
<b>Region Totals</b>	<b>4108</b>	<b>4108</b>	<b>4108</b>	<b>4437</b>	<b>4437</b>	<b>4437</b>	<b>4437</b>	<b>4437</b>	<b>4437</b>	<b>4437</b>	<b>4437</b>	<b>4437</b>	<b>4437</b>	<b>4437</b>	<b>4437</b>	<b>4437</b>
<b>Southwest</b>	424	424	424	441	441	441	441	441	441	441	441	441	441	441	441	441
Alhambra ES	424	424	424	441	441	441	441	441	441	441	441	441	441	441	441	441
Burton Ridge ES	491	491	491	445	445	445	445	445	445	445	445	445	445	445	445	445
Forest Ridge ES	465	465	465	472	472	472	472	472	472	472	472	472	472	472	472	472
Greenway Crossing ES	705	705	705	730	730	730	730	730	730	730	730	730	730	730	730	730
Clifford ES	445	445	445	472	472	472	472	472	472	472	472	472	472	472	472	472
Harmon ES	633	633	633	730	730	730	730	730	730	730	730	730	730	730	730	730
Lane Woods ES	809	809	809	837	837	837	837	837	837	837	837	837	837	837	837	837
<b>Region Totals</b>	<b>4243</b>	<b>4243</b>	<b>4243</b>	<b>4583</b>	<b>4583</b>	<b>4583</b>	<b>4583</b>	<b>4583</b>	<b>4583</b>	<b>4583</b>	<b>4583</b>	<b>4583</b>	<b>4583</b>	<b>4583</b>	<b>4583</b>	<b>4583</b>
<b>West</b>	738	738	738	555	555	555	555	555	555	555	555	555	555	555	555	555
Beth Park ES	543	543	543	536	536	536	536	536	536	536	536	536	536	536	536	536
Cherry Hill ES	700	700	700	739	739	739	739	739	739	739	739	739	739	739	739	739
Dayton Oaks ES	738	738	738	741	741	741	741	741	741	741	741	741	741	741	741	741
Edison ES	744	744	744	855	855	855	855	855	855	855	855	855	855	855	855	855
Frederick ES	564	564	564	565	565	565	565	565	565	565	565	565	565	565	565	565
West Hills ES	414	414	414	441	441	441	441	441	441	441	441	441	441	441	441	441
<b>Region Totals</b>	<b>4948</b>	<b>4948</b>	<b>4948</b>	<b>4912</b>	<b>4912</b>	<b>4912</b>	<b>4912</b>	<b>4912</b>	<b>4912</b>	<b>4912</b>	<b>4912</b>	<b>4912</b>	<b>4912</b>	<b>4912</b>	<b>4912</b>	<b>4912</b>
<b>Southwest</b>	414	414	414	414	414	414	414	414	414	414	414	414	414	414	414	414
Cherry Hill ES	414	414	414	414	414	414	414	414	414	414	414	414	414	414	414	414
<b>Region Totals</b>	<b>414</b>	<b>414</b>	<b>414</b>	<b>414</b>	<b>414</b>	<b>414</b>	<b>414</b>	<b>414</b>	<b>414</b>	<b>414</b>	<b>414</b>	<b>414</b>	<b>414</b>	<b>414</b>	<b>414</b>	<b>414</b>

CAPACITY

R: Replacement school scheduled to open in August 2022 as reflected in FY 2023 CAP.  
C: Constructed for future residential development.



# Budget

FY 23 Budget Is Complete.

Items Affected.. almost everything.

Capital Budget Will Be Over \$50M Less In FY24

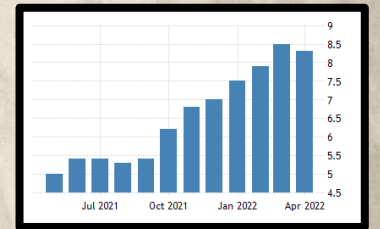
Key takeaways:

Transportation & Walking Distances



(MOE)  
Maintenance  
Of  
Effort  
=Same funding per pupil per year

MOE does not equate to  
Cost of Living (Inflation)



# OBRC Operating Budget Review Committee

## Redistricting Continues

June 9<sup>th</sup> with the presentation of the FEASIBILITY STUDY.  
Decision will be finalized the fall of 2022 to take effect the fall of  
2023

**PUBLIC INPUT EVENTS WILL OCCUR DURING SUMMER BREAK.**

While the focus is on the new High School in Jessup, any school at any grade level could be affected by cascading effects and feeder adjustments.

Regularly Monitor HCPSS and PTACHC for Details



# Redistricting

<https://www.hcpss.org/school-planning/redistricting-for-23-24>

# Legislative

Consider joining [Legislative@ptachc.org](mailto:Legislative@ptachc.org)

Surveys, Bill Analysis, Testimony, Position Development  
Session Reporting, Training, Communications  
Forums, Budgets, Support and more.

Help Us Help You....